



Invesco Energy Fund

RESULTS TO 30 SEPTEMBER 2009
A-Acc. SHARES



Key facts

| | |
|----------------------------|---|
| Manager: | Andrew Lees & Tyler Dann II, Houston Managed fund since January 2009 |
| Original Fund Launch: | February 2001 |
| Legal Status: | Luxembourg SICAV with UCITS status |
| Share Class Base Currency: | USD |
| Unit Type: | Accumulation |
| Current NAV: | USD 23.53 |
| 12 Month Price High: | USD 26.54 (01/10/08) |
| 12 Month Price Low: | USD 14.13 (21/11/08) |
| Current Fund Size: | USD 313.37 Mn. |
| Minimum Investment: | USD 1,500 |
| Initial Charge: | 5.25% |
| Annual Management Fee: | 1.50% |
| Trading Frequency: | Daily, forward pricing basis |
| Settlement: | Trade Date + 4 Days |
| Index: | MSCI World Energy ND |
| Bloomberg Code: | INVENFA LX |
| ISIN Code: | LU0123357419 |
| S&P Fund Rating: | A |
| Morningstar Rating™: | ★ ★ ★ |

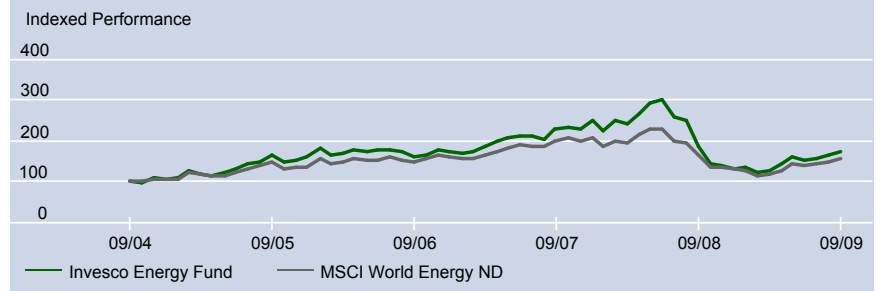
Fund objectives

[excerpt] The Fund aims to provide long-term capital growth by investing at least 70% of its total assets (without taking into account ancillary liquid assets) in an international portfolio of energy stocks, which include major oil companies, energy services, natural gas infrastructure companies and oil and gas exploration and production companies, as well as companies developing alternative energy sources. [Please refer to the simplified prospectus for the full investment objective.]

Quarterly fund commentary

Global equity markets rallied sharply in the third quarter on further improvement in the real economy attributable to the extraordinary government stimulus measures implemented earlier in the year. Based on our macro research, we believe two major themes will occur over the next 24 months. First, we believe there will be a demand recovery in crude oil and, if OPEC were to maintain their current production levels, resulting reductions in global crude inventories would further aid an oil price recovery. Second, we believe inevitable reductions in natural gas production will eventually work out the current supply imbalance. However, we also believe this last scenario is also highly dependent on weather conditions and that it may take much longer to come to fruition. With regard to portfolio construction, the fund continues to hold a significant underweight exposure to integrated oil and gas relative to the index. Additionally, the fund has overweight exposure in oil & gas exploration & production companies and oil & gas equipment & services companies. We believe increasing demand and limited production capacity offer the potential for long-term appreciation within the energy sector. Current reductions in supply, caused by short-term reductions in energy demand, will exacerbate future supply constraints. We continue to focus on companies that exhibit the ability to control costs and increase production profiles with new discoveries or by leveraging existing assets.

Long-term performance*



Cumulative performance*

| | YTD | 1 year | 3 years | 5 years | % growth |
|-------|-------|--------|---------|---------|----------|
| Fund | 34.23 | -6.37 | 8.48 | 75.99 | |
| Index | 19.26 | -6.19 | 4.55 | 55.48 | |

Annual performance*

| | 2008 | 2007 | 2006 | 2005 | 2004 | % growth |
|-------|--------|-------|-------|-------|-------|----------|
| Fund | -48.07 | 44.83 | 8.72 | 51.20 | 35.69 | |
| Index | -38.05 | 29.79 | 17.86 | 28.74 | 28.10 | |

Standardised rolling 12 month performance**

| | 30.09.04 | 30.09.05 | 30.09.06 | 30.09.07 | 30.09.08 | 30.09.09 | % growth |
|------|----------|----------|----------|----------|----------|----------|----------|
| Fund | 64.92 | -1.63 | 41.86 | -18.33 | -6.37 | | |

The standardised past performance information is updated on a quarterly basis. Should you require up-to-date past performance information this is available on our website www.invescointernational.co.uk or by contacting us.

Fund rankings*

| | Mstar IM GIF sector: Energy | | | | |
|------------------|-----------------------------|--------|---------|---------|--|
| | YTD | 1 year | 3 years | 5 years | |
| Quartile Ranking | 2 | 2 | 1 | 1 | |
| Absolute Ranking | 22/63 | 26/60 | 8/32 | 4/20 | |

Important information & Risk Warnings

Past performance is not a guide to future returns. (Source: © 2009 Morningstar) * Performance to 30 September 2009 unless otherwise stated; Fund: Mid to mid, Gross income reinvested. Index: Performance is calculated with income net of withholding taxes reinvested. The figures do not reflect the initial charge payable by individual investors. ** Mid to mid, gross income re-invested to 30 September 2009. All performance data on this fact sheet is in fund currency.

Invesco Energy Fund

RESULTS TO 30 SEPTEMBER 2009

A-Acc. SHARES

Important information & Risk Warnings

The value of investments and any income will fluctuate (this may partly be the result of exchange rate fluctuations) and investors may not get back the full amount invested. Current tax levels and reliefs may change. Depending on individual circumstances, this may affect investment returns. There is no guarantee that the securities referred to in this document will be held by Invesco funds in the future. Please refer to the latest relevant Full Prospectus, the fund's Simplified Prospectus and latest Annual and Interim Short Reports for more information. Further information on our products is available using the contact details shown. The distribution and the offering of funds in certain jurisdictions may be restricted by law. Persons into whose possession this document may come are required to inform themselves about and to comply with any relevant restrictions. This does not constitute an offer or solicitation by anyone in any jurisdiction in which such an offer is not authorised or to any person to whom it is unlawful to make such an offer or solicitation. Persons interested in acquiring funds should inform themselves as to (i) the legal requirements in the countries of their nationality, residence, ordinary residence or domicile; (ii) any foreign exchange controls; and (iii) any relevant tax consequences. The fund is not registered under any US securities law, and may not be offered or sold in the USA, its territories or possessions, nor to any US persons. The fund is not offered for sale in any jurisdiction in which the fund is not authorised to be publicly sold. The fund is available only in jurisdictions where its promotion and sale is permitted. For the purposes of UK law, funds are recognised schemes under section 264 of the Financial Services & Markets Act 2000. The protections provided by the UK regulatory system, for the protection of retail clients, do not apply to offshore investments. Compensation under the UK's Financial Services Compensation Scheme will not be available and UK cancellation rights do not apply. Issued in the UK by Invesco Global Investment Funds Limited, 30 Finsbury Square, London EC2A 1AG. Authorised and regulated by the Financial Services Authority in UK. Issued in Dubai for Professional Clients only by Invesco Asset Management Limited, PO Box 506599, Building 5, Level 6, The Gate Precinct, Dubai, United Arab Emirates. Regulated by the Dubai Financial Services Authority.

© Copyright 2009 Morningstar, Inc. All rights reserved. This publication is for informational purposes only. Neither Morningstar nor any Morningstar data providers guarantee the accuracy or completeness of the information on this factsheet, and cannot make any guarantee regarding results from its usage. Asset allocation data is derived by Morningstar using full holdings data provided by Invesco. Morningstar Licensed Tools and Content powered by Interactive Data Managed Solutions.

Mstar IM GIF sector characteristics* %

| | 1 year | 3 years | 5 years | 10 years |
|-----------------------|--------|---------|---------|----------|
| Maximum Performance | 14.17 | 32.79 | 109.84 | 414.17 |
| Minimum Performance | -39.59 | -24.28 | 41.04 | 99.39 |
| Average Performance | -9.02 | 3.43 | 64.21 | 180.83 |
| Maximum Loss | -54.76 | -76.38 | -67.49 | -62.24 |
| Minimum Loss | -8.94 | -20.24 | -48.86 | -53.59 |
| Average Loss | -28.50 | -57.60 | -57.49 | -58.11 |
| Annualised Volatility | 47.03 | 31.17 | 27.36 | 23.20 |

Source: Morningstar (as at 30/09/09)

Holdings and active weights %

| | | | | Total holdings 49 | |
|---------------------------|-----|------------------------------|-----|---------------------|------|
| Top 10 holdings | % | Top 10 positive | + | Top 10 negative | - |
| Occidental Petroleum | 4.9 | Halliburton | 3.1 | ExxonMobil | 11.6 |
| Halliburton | 4.2 | Oceaneering International | 3.0 | BP | 7.3 |
| Weatherford International | 3.5 | Total SA ADR | 3.0 | Total | 5.6 |
| Anadarko Petroleum | 3.4 | Weatherford International | 2.8 | Chevron | 4.9 |
| Apache | 3.3 | Cameron International | 2.6 | Royal Dutch Shell | 4.5 |
| ExxonMobil | 3.2 | Range Resources | 2.5 | Royal Dutch Shell B | 3.3 |
| National Oilwell Varco | 3.1 | Continental Resources | 2.4 | Eni | 2.9 |
| EOG Resources | 3.1 | National Oilwell Varco | 2.4 | ConocoPhillips | 2.8 |
| Cameron International | 3.0 | Helmerich & Payne | 2.3 | BG Group | 2.6 |
| Oceaneering International | 3.0 | Petroleo Brasileiro S.A. ADR | 2.2 | EnCana | 1.9 |

Source: Invesco (as at 30/09/09)

Sector weightings %

| | Index | Fund |
|-------------------------------|-------|------|
| Oil, Gas and Consumable Fuels | 87.0 | 58.9 |
| Energy Equipment and Services | 13.0 | 30.3 |
| Gas Utilities | 0.0 | 1.9 |
| Electric Utilities | 0.0 | 1.4 |
| Multi-Utilities | 0.0 | 1.2 |
| Construction and Engineering | 0.0 | 0.7 |
| Metals and Mining | 0.0 | 0.7 |
| Others | 0.0 | 0.1 |
| Cash | 0.0 | 4.8 |

Source: Invesco (as at 30/09/09)

Geographical weightings %

| | Index | Fund |
|-----------------|-------|------|
| USA | 52.0 | 78.5 |
| United Kingdom | 19.0 | 4.2 |
| Canada | 11.6 | 3.8 |
| Switzerland | 0.6 | 3.5 |
| France | 6.1 | 3.0 |
| Brazil | 0.0 | 2.2 |
| Other Countries | 10.7 | 0.0 |
| Cash | 0.0 | 4.8 |

Source: Invesco (as at 30/09/09)

Financial characteristics

| | Fund |
|--|--------------|
| Average Weighted Market Capitalisation | \$ 44.10 Bn. |
| Median Market Capitalisation | \$ 14.89 Bn. |

Source: Morningstar (as at 30/09/09)

3 year characteristics

| | Volatility | Sharpe Ratio | Correlation | Alpha | Beta | Tracking Error | Information Ratio |
|------|------------|--------------|-------------|-------|------|----------------|-------------------|
| Fund | 31.43 | 0.01 | 0.95 | 2.70 | 1.17 | 10.66 | 0.12 |

Source: Morningstar (as at 30/09/09)

Important Information & Risk warnings

Where Invesco has expressed views and opinions, these may change. As this is a theme-based managed fund, investors should be prepared to accept a higher degree of risk than for a fund with a broader investment mandat. The figures do not reflect the initial charge payable by individual investors.